



## STEiNEL XSolar LH-N Sensor Led Lamp Instruction Manual

[Home](#) » [STEiNEL](#) » STEiNEL XSolar LH-N Sensor Led Lamp Instruction Manual 

STEiNEL XSolar LH-N Sensor Led Lamp



## Contents

- 1 About this document
- 2 General safety precautions
- 3 XSolar LH-N
- 4 Installation
- 5 Operation
- 6 Malfunctions
- 7 Disposal
- 8 Documents / Resources
  - 8.1 References
- 9 Related Posts

## About this document

**Please read carefully and keep in a safe place.**

- Under copyright. Reproduction either in whole or in part only with our consent.
- Subject to change in the interest of technical progress.

## Symbols



Hazard warning!



Reference to other information in the document.

## General safety precautions



Hazard from vapours or electrolyte fluid!

Vapours or electrolyte fluid may escape if the rechargeable battery is damaged or used improperly. Coming into contact with them may result in severe injury (e.g. loss of sight, acid burns).

- Never open the rechargeable battery enclosure or the rechargeable battery itself.
- Do not allow vapours or electrolyte fluid to come into contact with your eyes. In the event of contact with eyes:
  - Do not rub your eyes.
  - Immediately rinse eyes with plenty of clean water (such as tap water).
  - Seek medical advice.
- do not touch any electrolyte fluid that has escaped.
- Immediately move product away from naked flames or sources of heat.
- Immediately remove contaminated clothing.



**Hazard from LED light!**

Looking directly into the LED light when it is ON could damage your retina.

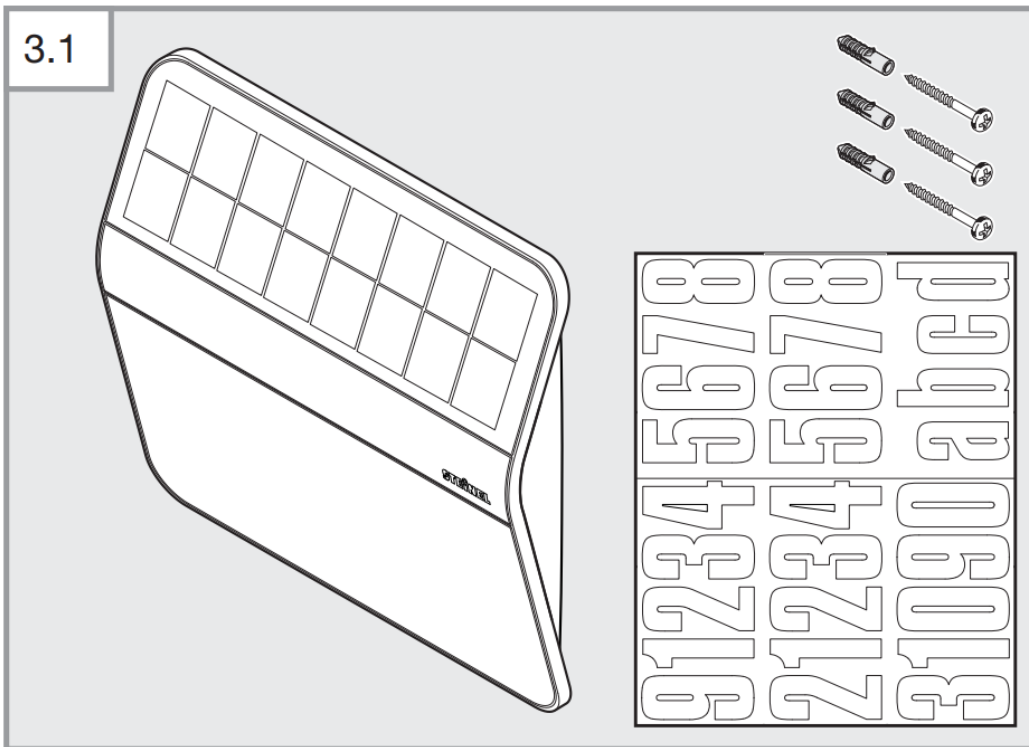
- Never look into the LED house number light at short range or for any prolonged period (> 5 minutes).
- The house number light must not be installed in potentially explosive atmospheres.  
For trouble-free operation, choose an installation site that is not exposed to vibration or shock.
- Protect the solar panel from mechanical strain (e.g. tree branches).
- The product must not be modified or altered in any way.

## XSolar LH-N

### Proper use

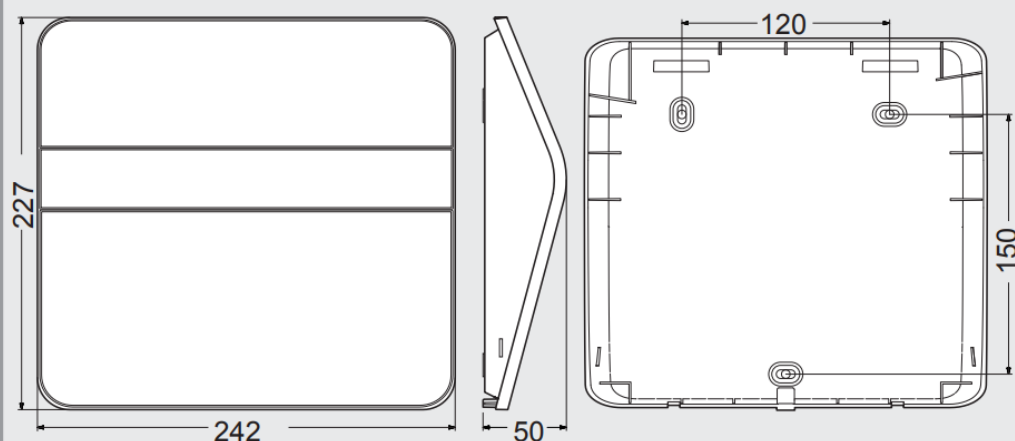
- LED house number light with photo-cell controller.
- For mounting on outdoor walls.
- House number light at places where no mains power is available.
- With independent power supply from solar panel and rechargeable battery.
- Switches ON automatically at dusk.

### Package contents (Fig.3.1)



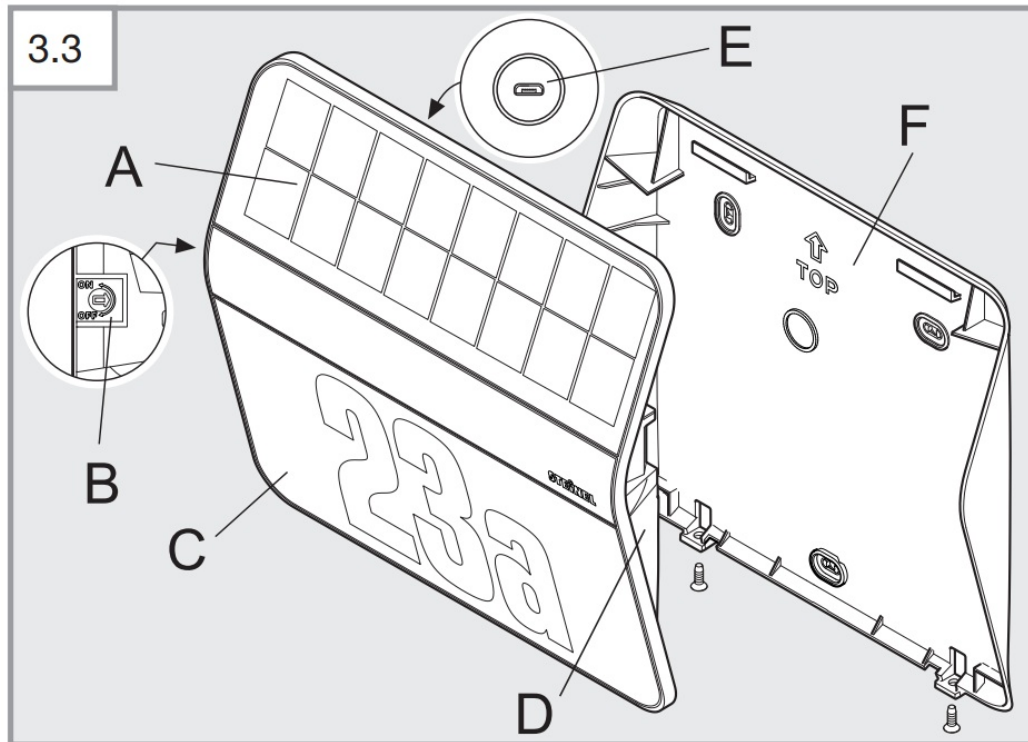
### Product dimensions (Fig.3.2)

### 3.2



Product components (Fig.3.3)

### 3.3



- A** Solar panel
- B** Programme selector switch
- C** Illuminated panel
- D** Base
- E** Micro USB charging socket
- F** Wall mount

#### Technical specifications for house number light

- Output: 4 LEDs, 24 mW max.
- Light-level setting: 2 lux

- Colour temperature: 4,000 kelvin
- Protection class: III
- IP rating: IP 44
- Temperature range: -20 °C to +40 °C
- Dimensions (WxHxD): 242 x 227 x 50 mm

### Technical specifications for rechargeable battery

- LiFePO (lithium-iron-phosphor).
- Can be recharged at any time without shortening battery lifespan.
- Automatic recharging by solar panel.
- Can be recharged using charging adapter at micro USB socket (5 V).
- Can be replaced by the manufacturer or qualified electricians.
- Rechargeable battery capacity: 1100 mAh.
- Max. illumination time: 12 days.
- Micro USB charging socket: 5 V, 1 A max.

Recharging time depends on the site of installation (direct sunlight). Expect charging to take many times longer in winter or on rainy days.

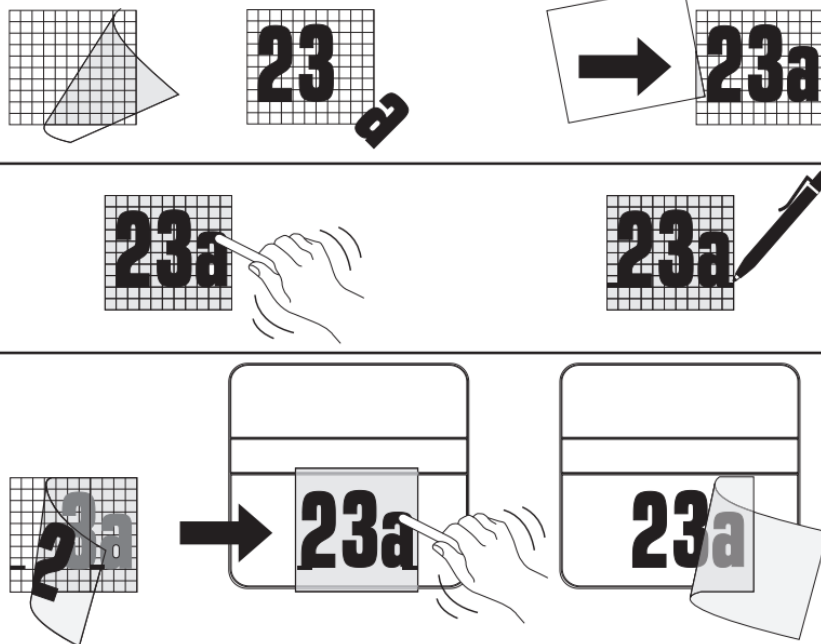
### Installation

- Check all components for damage.
- Do not use the product if the solar panel or LED panel is damaged.

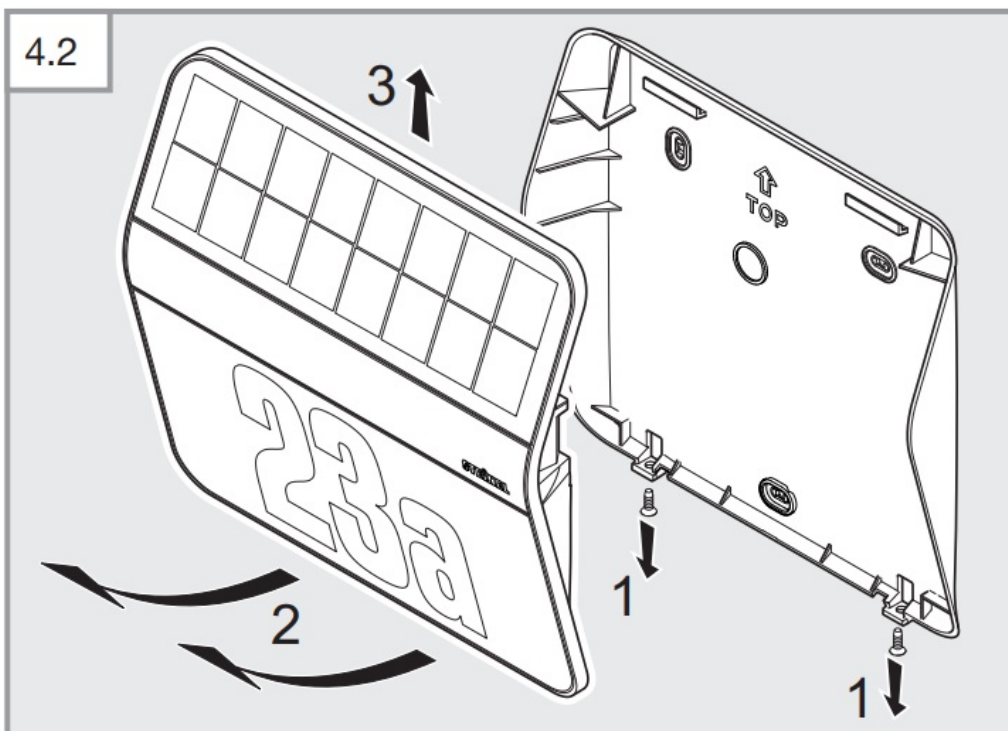
Operating reliability will be limited if the product is used in adverse conditions (e.g. installed in shade or behind glass)

- Choose an appropriate site with plenty of sunlight for installing the solar panel (facing south).
- Avoid shade from porches, overhanging roofs or trees.
- Choose site with little extraneous / artificial light (street lighting etc.).
- Affix house numbers to illuminated panel (**Fig.4.1**).

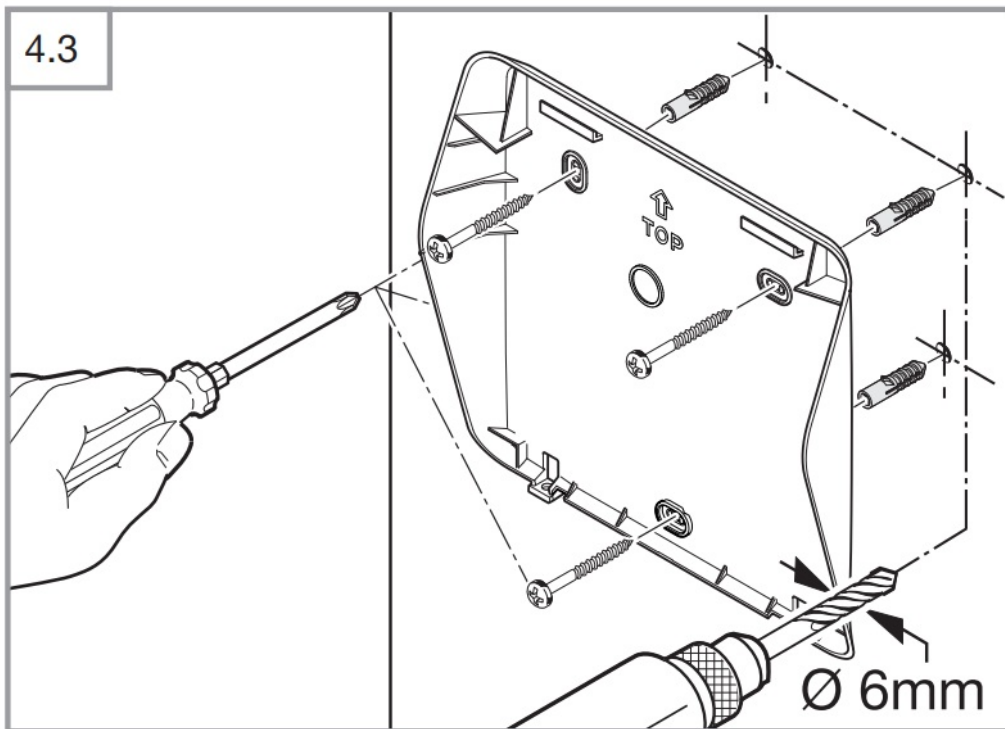
4.1



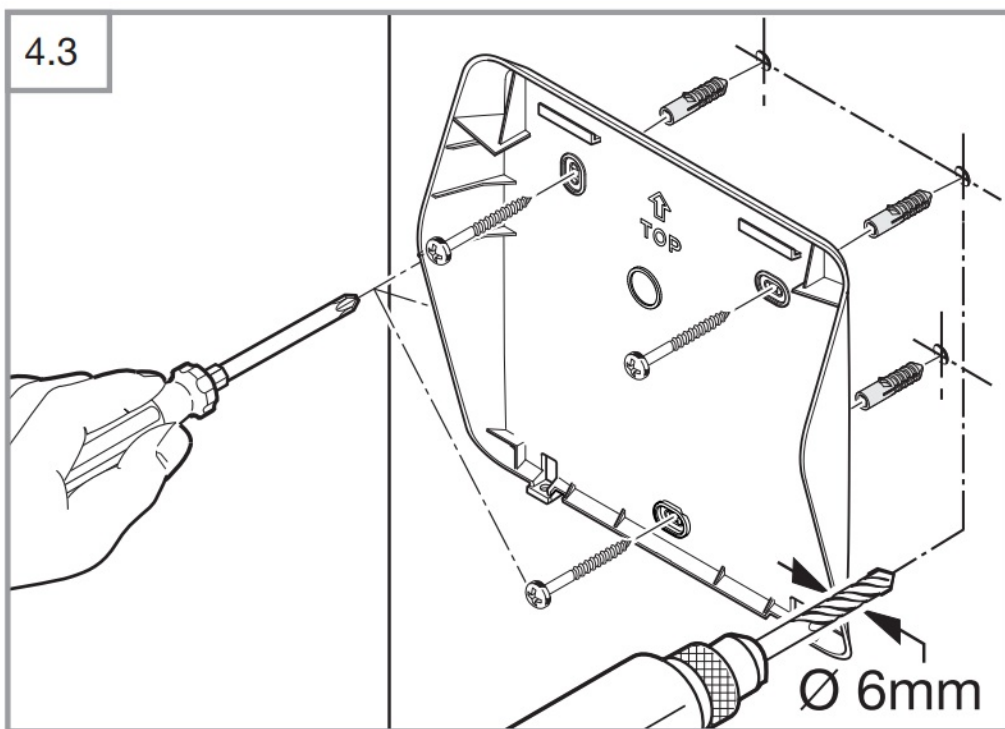
- Separate base from wall mount (**Fig.4.2**).



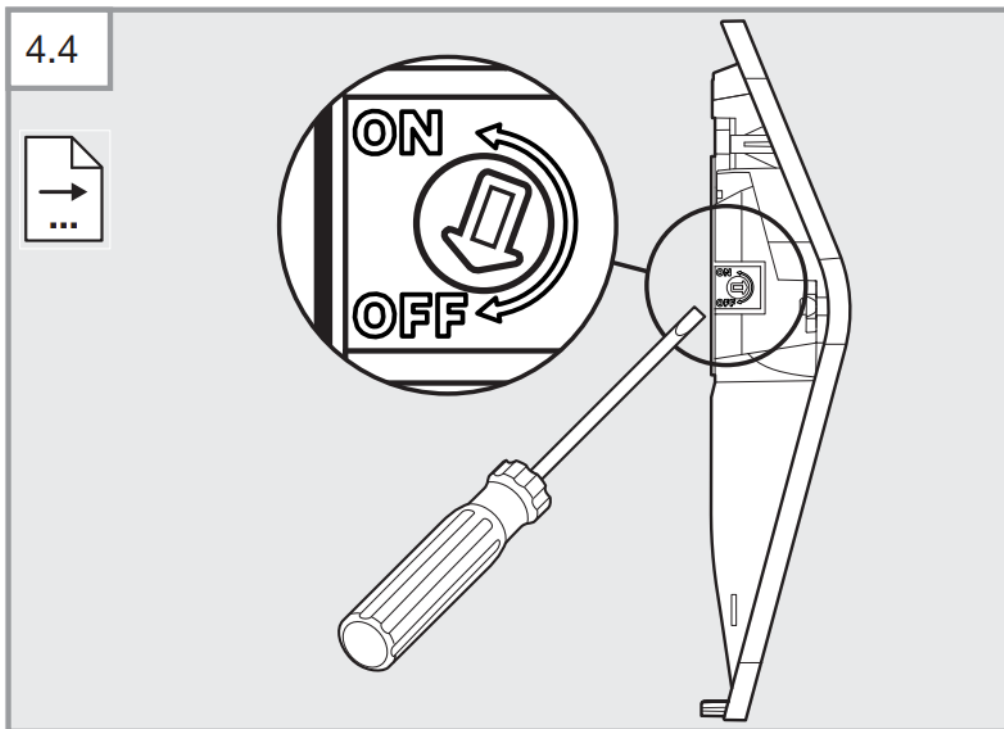
- Drill holes and insert wall plugs (**Fig.4.3**).



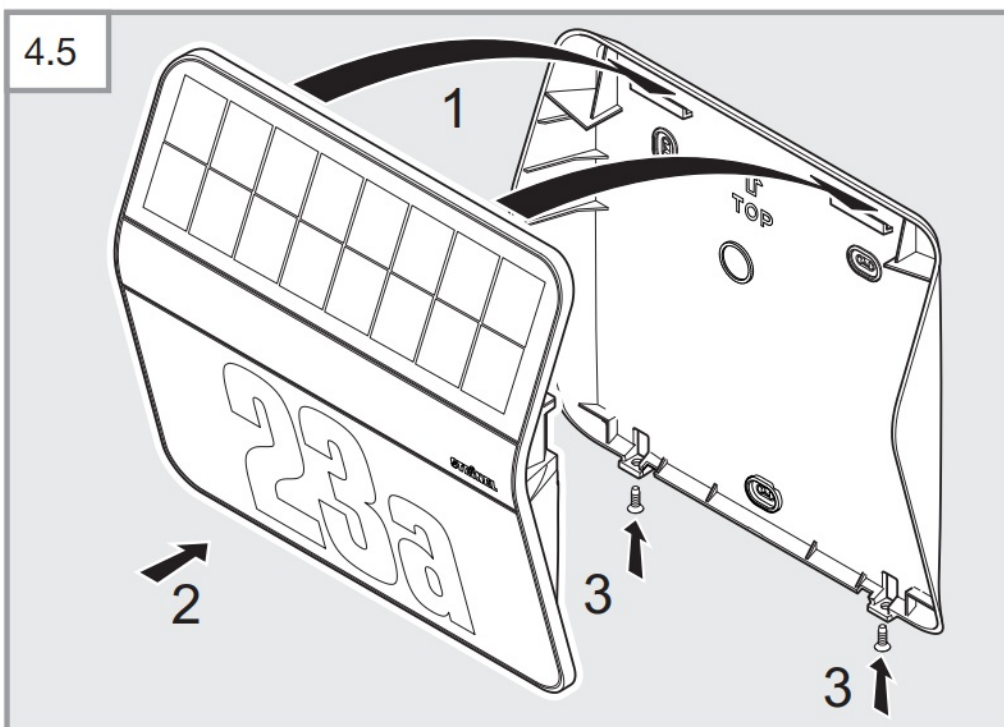
- Screw-fasten wall mount to the wall (**Fig.4.3**).



- Make settings (**Fig.4.4**). → “5. Operation”



- Mount base on wall mount and screw into place (**Fig.4.5**).



## Operation

### Before using for the first time

- Activate house number light by setting the programme selector switch to ON.  
The house number light stays in test mode for one minute before it starts to work in its normal operating mode.

### Test mode

In test mode the house number light is switched ON regardless of ambient brightness. The red LED is also lit in



test mode. No LED light can be seen during the day because of its low level of brightness.

### **Setting the chosen operating mode by programme selector switch**

- OFF: factory setting.

The power consumers (LEDs) are deactivated.

- ON: house number light active. It switches ON when ambient light falls below the light level threshold (2 lux).
- Depending on battery charge, the house number light is adjusted to optimum brightness. The house number light switches OFF again automatically at dawn.

### **Charging the battery manually**

The red LED flashes when battery capacity is low (e.g. in poor weather). The battery can be recharged with a standard micro USB charging adapter (not included). Battery recharging can take up to 6 hours.

### **Risk of damage to property from penetrating moisture**

When open, the micro USB charging socket (E) is not protected from the ingress of water.

- Only recharge batteries in a dry room.
- Connect micro USB charging adapter
  - Red LED flashing: charging in progress.

The LED may take up to 10 minutes to start flashing if the battery has run down to very low level.

- Red LED shows: battery is fully charged.
- Remove micro USB charging adapter
  - Red LED goes out.

### **Risk of damage to property when light is not in use**

If the house number light is not used for a prolonged period (e.g. in storage), the battery may suffer irreparable damage from exhaustive discharge.

- Set programme selector switch to OFF.
- The battery must be on full charge before taking the light out of service.
- Regularly charge the battery while the light is not in use.

## **Malfunctions**

### **Red LED flashing**

- Battery capacity too low.
- Charge battery with micro USB charging adapter (not included).

### **House number light will not switch ON**

- Battery capacity too low.

- Charge battery with micro USB charging adapter (not included).
- Programme selector switch set to OFF.
- Set programme selector switch to ON.
- House number light is being blinded.
- Avoid incidence of extraneous/artificial light.

### **Battery not charging**

- Solar panel dirty.
- Clean solar panel with a soft cloth and mild detergent.
- Solar panel not installed in the best place.
- Check site of installation (as much direct sunlight as possible).
- It may no longer be possible to recharge the battery after many years of use.
- Get rechargeable battery changed (replacement XSolar battery, 3.3 V 1.1 AH, EAN 4007841008512).
- Please send the product well-packed to your nearest service station. The rechargeable battery must only be replaced by the manufacturer or qualified electricians.

### **Cleaning and Maintenance**

The product requires no maintenance.

Regularly checking the product for damage can prolong its lifespan.

Removing dirt can help to make the product work longer.

### **Risk of damage to property**

Using the wrong detergent can damage the house number light.

- Make sure detergent does not harm the surface.
- Clean house number light with a soft cloth and mild detergent.

If solar panel is dirty or weather has left deposits on it:

- Clean solar panel with a soft cloth and mild detergent.

### **Disposal**

Electrical and electronic equipment, accessories and packaging must be recycled in an environmentally compatible manner.



Do not dispose of electrical and electronic equipment as domestic waste.

EU countries only:

Under the current European Directive on Waste

Electrical and Electronic Equipment and its implementation in national law, electrical and electronic equipment no longer suitable for use must be collected separately and recycled in an environmentally compatible manner.



Do not throw devices, rechargeable batteries/batteries into household waste, fire or water at the end of their useful life.

Rechargeable batteries/batteries should be collected, recycled or disposed of in an environmentally friendly manner.

#### **EU countries only:**

In accordance with Directive 2006/66/EC, defective or spent rechargeable batteries/batteries must be recycled. Waste rechargeable batteries/batteries can be returned to the point of purchase or to a collection facility for hazardous substances.

#### **Manufacturer's warranty**

##### **STEINEL product:**

- Manufactured with the utmost care.
- Tested for proper operation and safety in accordance with applicable regulations.
- With final inspection.

##### **STEINEL warranty:**

- Warranty on perfect condition and proper working order.
- 36 months starting on the day the product was sold to the consumer.
- Covers the removal of defects resulting from material flaws or manufacturing faults.
- The warranty will be met by repair or replacement of defective parts at our own discretion.
- The warranty does not cover damage to wearing parts.
- This warranty does not cover damage and defects resulting from improper treatment or maintenance.
- Further consequential damage to other objects is excluded from the warranty.
- Claims under the warranty will only be accepted if the product is returned fully assembled with a brief description of the fault, a receipt or invoice (date of purchase and dealer's stamp).
- Please send the product well packed to the appropriate Service Centre.


##### **Repair service:**

- Outside the warranty period.
- Defects not covered by the warranty.
- Ask your nearest service station for the possibility of repair.











**Further information:** <http://www.steinel.de>



## Documents / Resources

	<p><a href="#">STEINEL XSolar LH-N Sensor Led Lamp</a> [pdf] Instruction Manual XSolar LH-N Sensor Led Lamp, XSolar LH-N, Sensor Led Lamp, Led Lamp, Lamp</p>
---	---

## References

-  [Ambergs - apgaismojuma un sensoru tehnikas, santehnikas un celtniecības instrumentu vairumtirgotājs](#)
-  [Daljinsko Upravljanje d.o.o.](#)
-  [dAukce.cz - doména z aukce](#)
-  [F.Fonseca - High-tech Solutions since 1978](#)
-  [Avalehele](#)
-  [Sensorer | Sensorstyrtd belysning från Steinel i KHS](#)
-  [Narzędzia, elektronarzędzia, oświetlenie, czujniki ruchu](#)
-  [Minusines - Leader du matériel électrique et de l'éclairage](#)
-  [Priporočam.si - spletna trgovina za izključno najboljše stvari](#)
-  [Roliba A/S - En moderne B2B handelsvirksomhed med stort udvalg](#)
-  [SAOS Teknoloji STEINEL Türkiye Distribütörü | SAOS Teknoloji](#)
-  [Steinel Group | STEINEL](#)
-  [STEINEL | Steinel Group](#)
-  [STEINEL | Steinel Grupul](#)
-  [Sensorer | Sensorstyrtd belysning från Steinel i KHS](#)
-  [ООО "Штайнель" - эксклюзивный дилер Steinel GMBH на территории Российской Федерации и Республике Беларусь](#)
-  [Ташев-Галвинг ООД: магазин за машини, инструменти, строителни материали, крепежи и градинска техника](#)
-  [Van Spijk | Online B2B inkoopplatform - VanSpijk.nl](#)
-  [Energiefektive løsninger - Vilan.no](#)
-  [Van Spijk | Online B2B inkoopplatform - VanSpijk.nl](#)